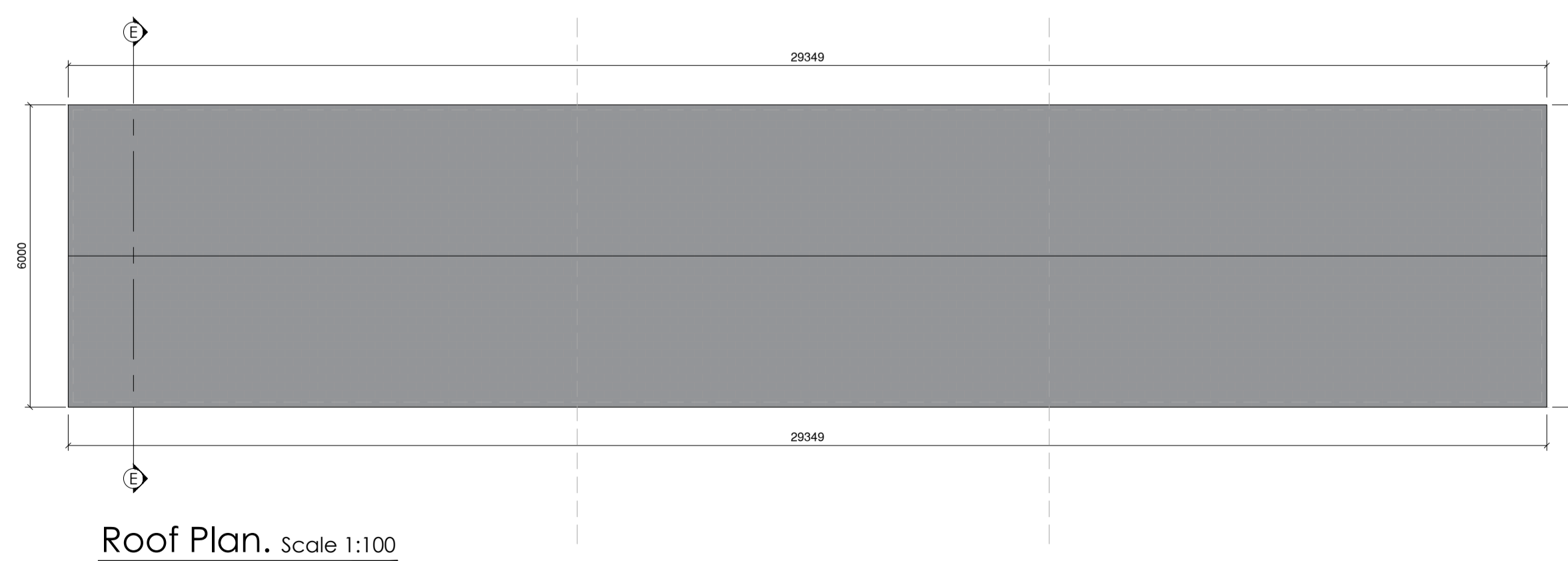
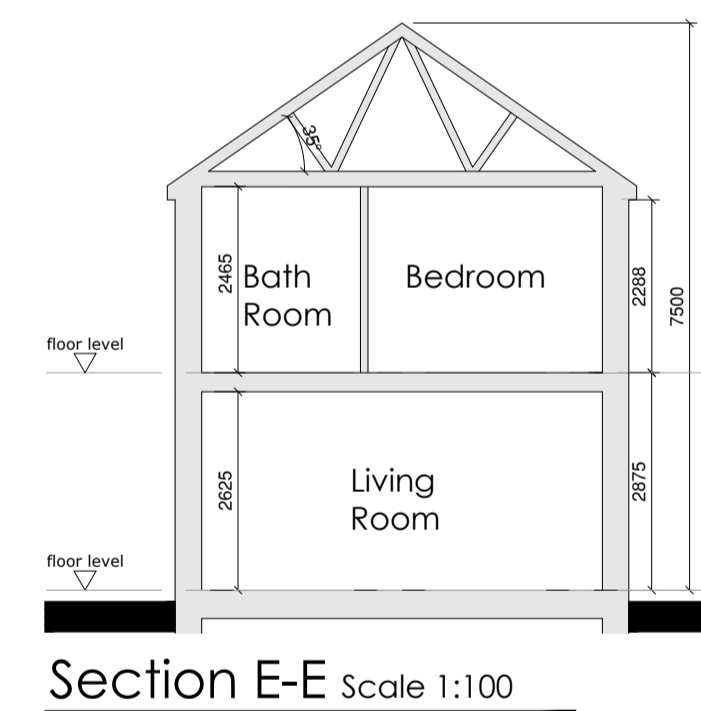
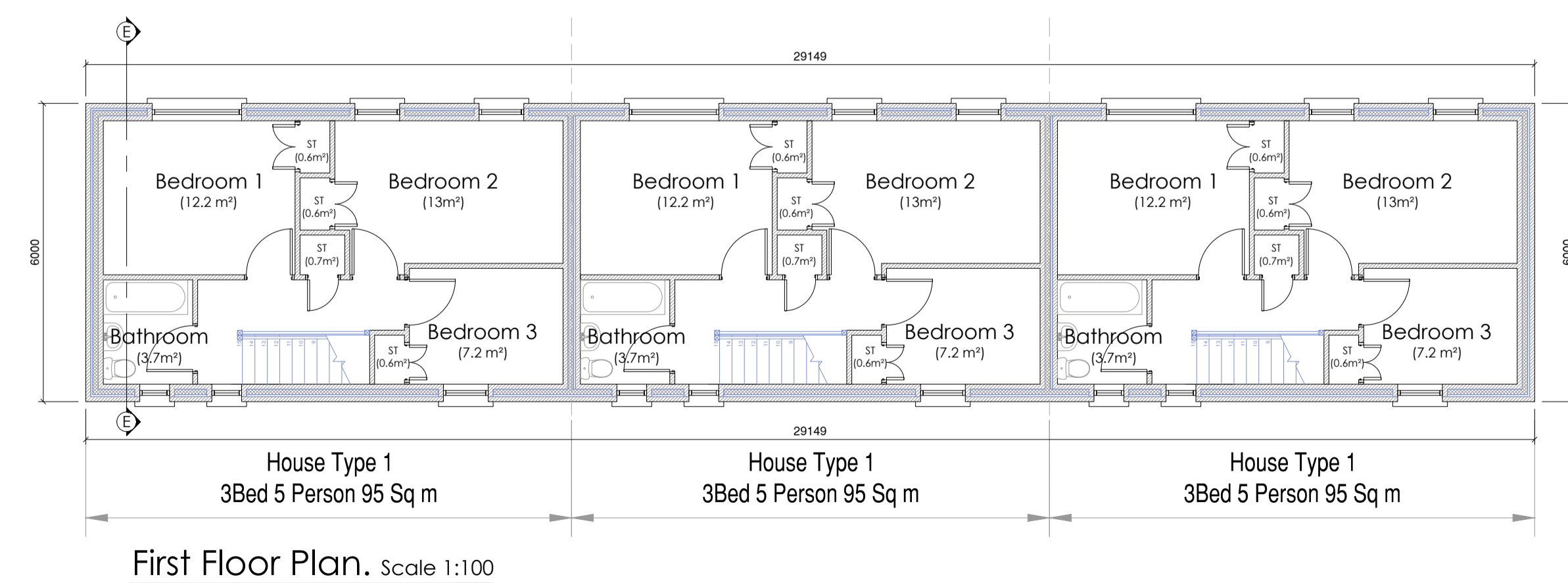
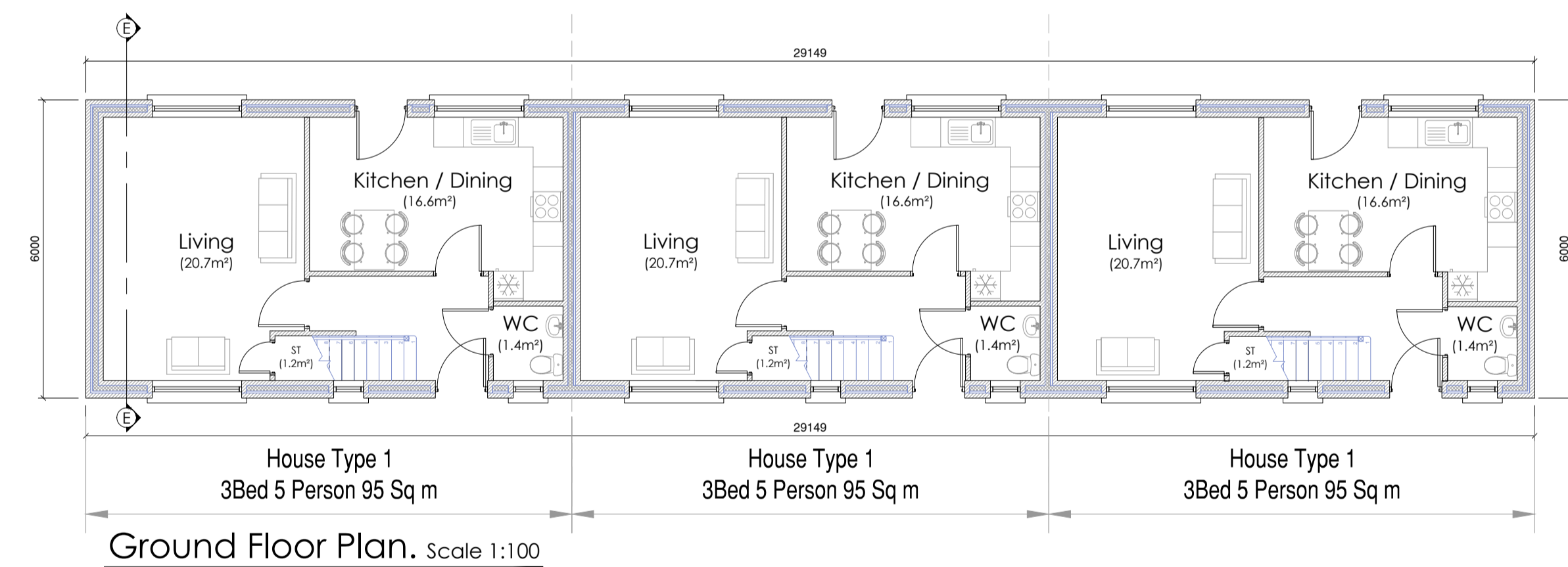


House Type 1

Quality Housing for Sustainable Communities Standards

HT 1 - 3 Bedroom / 5 Person					
	Gross Floor Areas (m ²)	Min-Main Living Room (m ²)	Aggregate Living Area (m ²)	Aggregate Bedroom Area (m ²)	Storage (m ²)
Required	92 sqm	13 sqm	34 sqm	32 sqm	5 sqm
Provided - HT1	95 sqm	20.7 sqm	37.3 sqm	32.4 sqm	3.7sqm

Minimum Room Widths:			
	Single Bedroom (m)	Double Bedroom (m)	Living Room (m)
Required	2.1m	2.8m	3.6m
Provided - HT1	2.3m	2.8m	4.0 m



Revisions		
x	xx/xx/xx	x
Rev:	Date:	Details:

Donegal County Council
Architectural Services

Comhairle Contae Dhún na nGall
Donegal County Council

DCC Tel: 074 91 53900 | DCC Fax: 074 91 72812

PART VIII PLANNING APPLICATION

Project:
Gallows Lane, Lifford
Ref: HCS 02 19

Drawing Title:
HT1 Block (Units 1-3)
HT1 3 Bed 5 P House

Drawing No: P008

Date:	12.03.20	Scale:	1:100 @ A1
Drawn by:	SMC	Job No:	HCS 02 19